

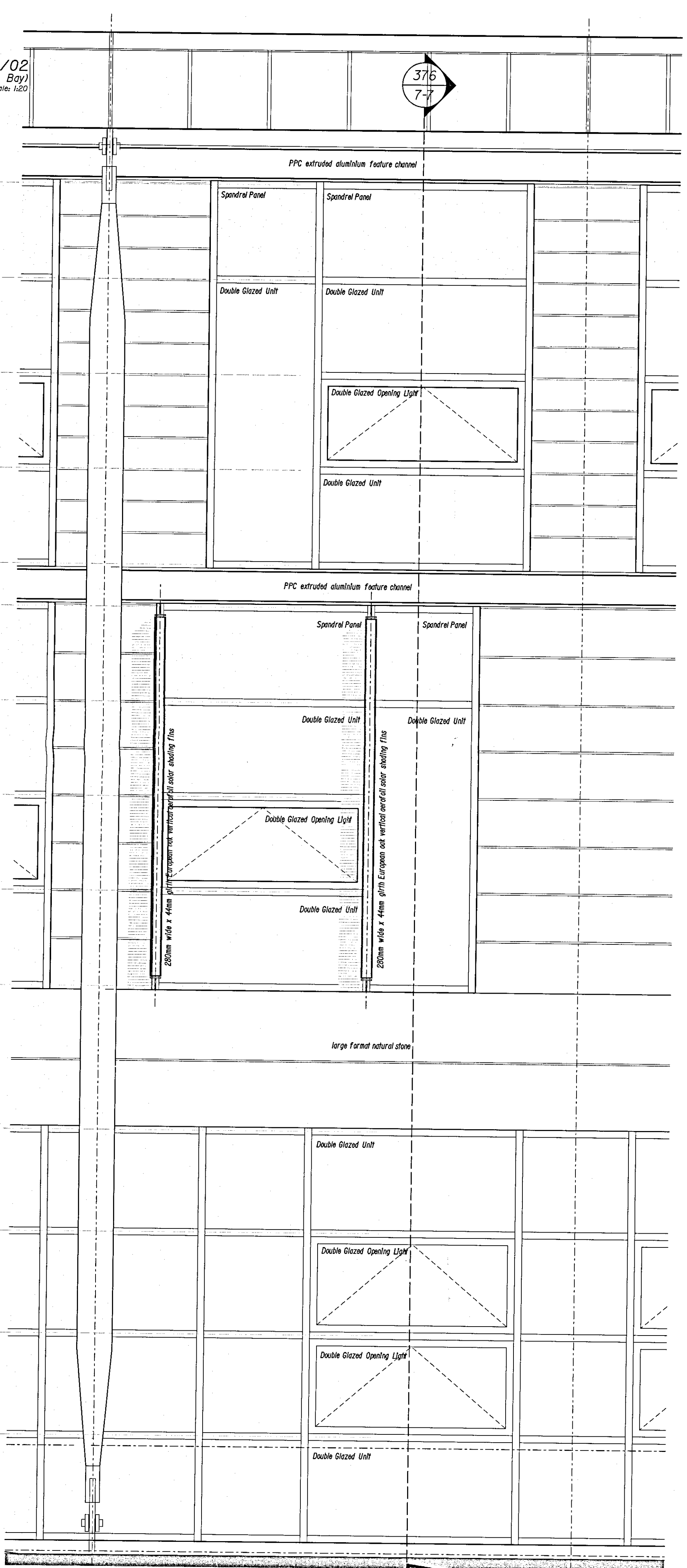
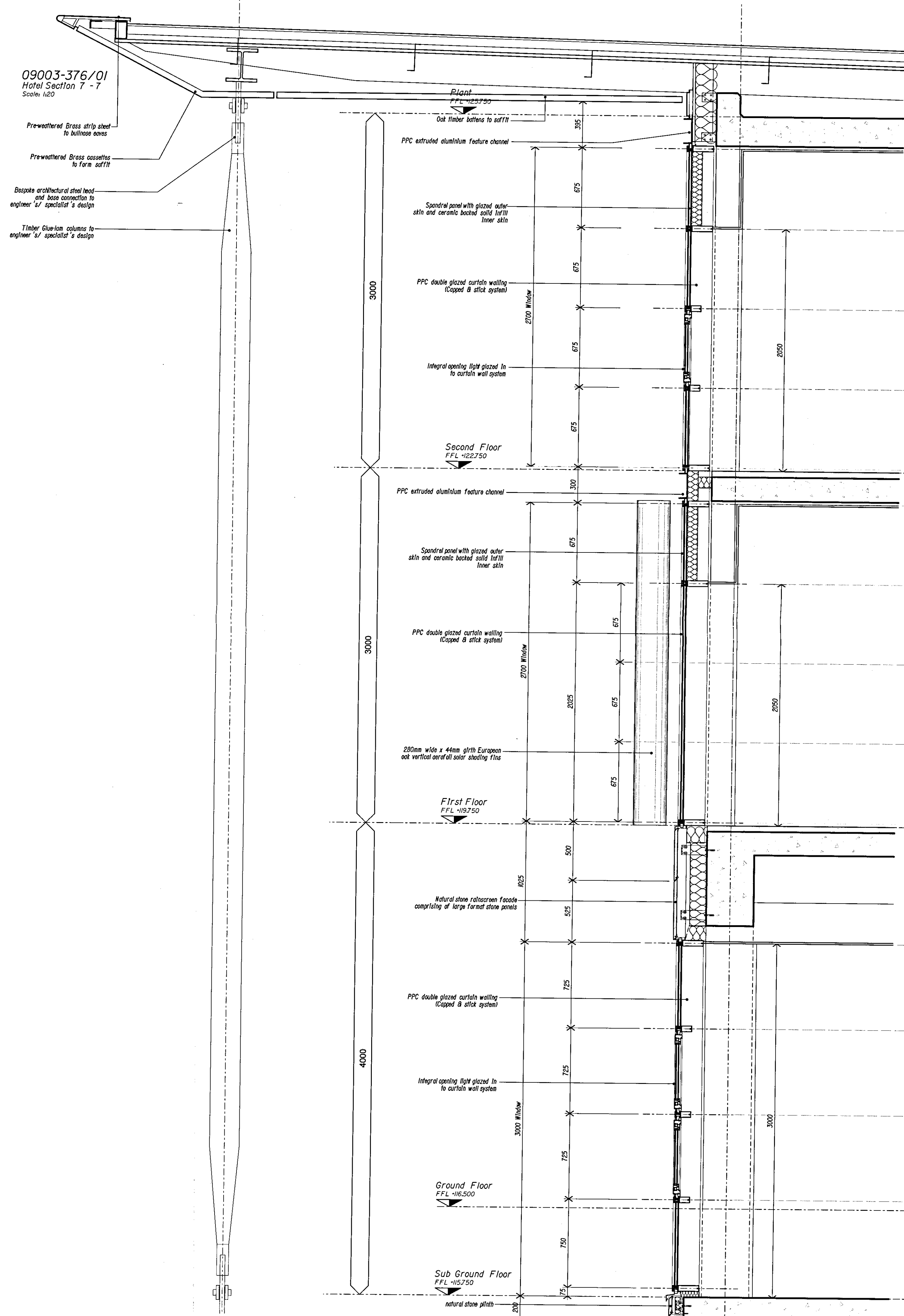
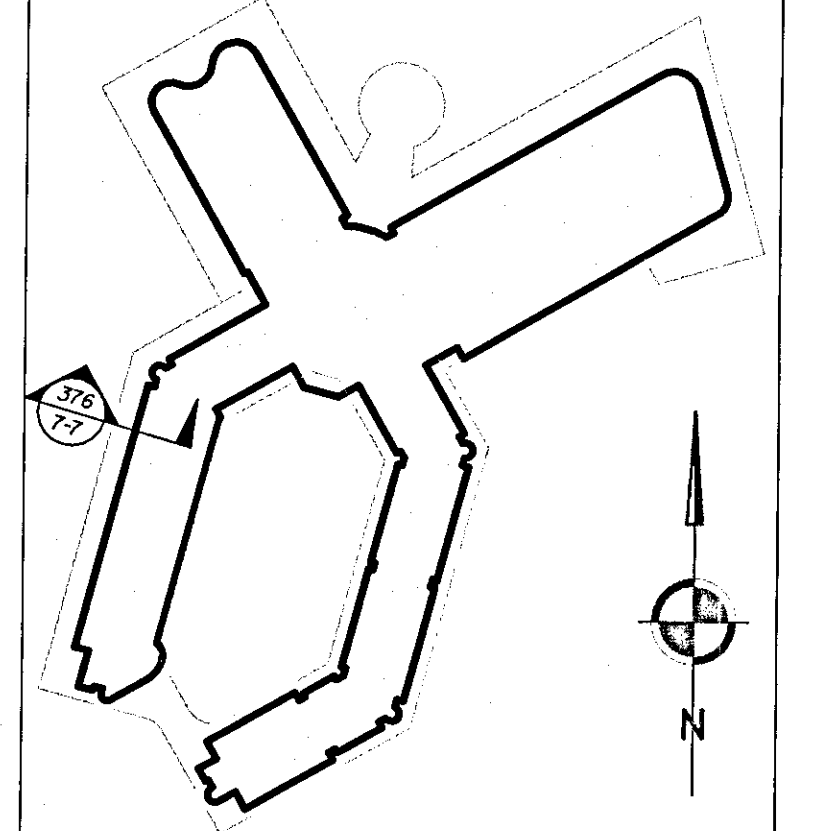
09003-376/01
Hotel Section 7-7
Scale: 1:20

- Pre-weathered Brass strip sheet to bullnose eaves
- Pre-weathered Brass cassettes to form soffit
- bespoke architectural steel head and base connection to engineer's / specialist's design
- Timber Glulam columns to engineer's / specialist's design

09003-376/02
Hotel Part Elevation (Window Bay)
Scale: 1:20

376
7-7

Notes
1. To be read with CDM Risk Register
2. Do not scale, check this is the latest version, if in doubt, ask see drawing issue log for issue history
09003-376/03
Hotel Section Location Plan
Scale: NTS



RECEIVED
24 FEB 2010
TIME:

P/10/00255

A	ISSUED FOR PLANNING	2010.02.12	MC	SG
-	Draft Issue For Comments	2010.01.29	MC	SG
Rev	Notes	Date	By	Review

redboxarchitecture
Red Box Architecture, St Nicholas Church, Newcastle upon Tyne, NE1 1RL
T: +44 (0)191 245 7105, F: +44 (0)191 245 7111, mail@redboxdesign.com, www.redboxdesign.com
Red Box Design Group Ltd trading as Red Box Architecture
redboxdesigngroup : redboxinteriors : redboxgallery

THE NATIONAL FOOTBALL CENTRE
ST GEORGE'S PARK

PROPOSED HOTEL
Section 7-7

See Dwg	09 003	376	A
A1	PLANNING		